



MOORE INFORMATION
PUBLIC OPINION RESEARCH

**Voter Attitudes
About the
Rock Creek Mine**

July 5-7, 2005



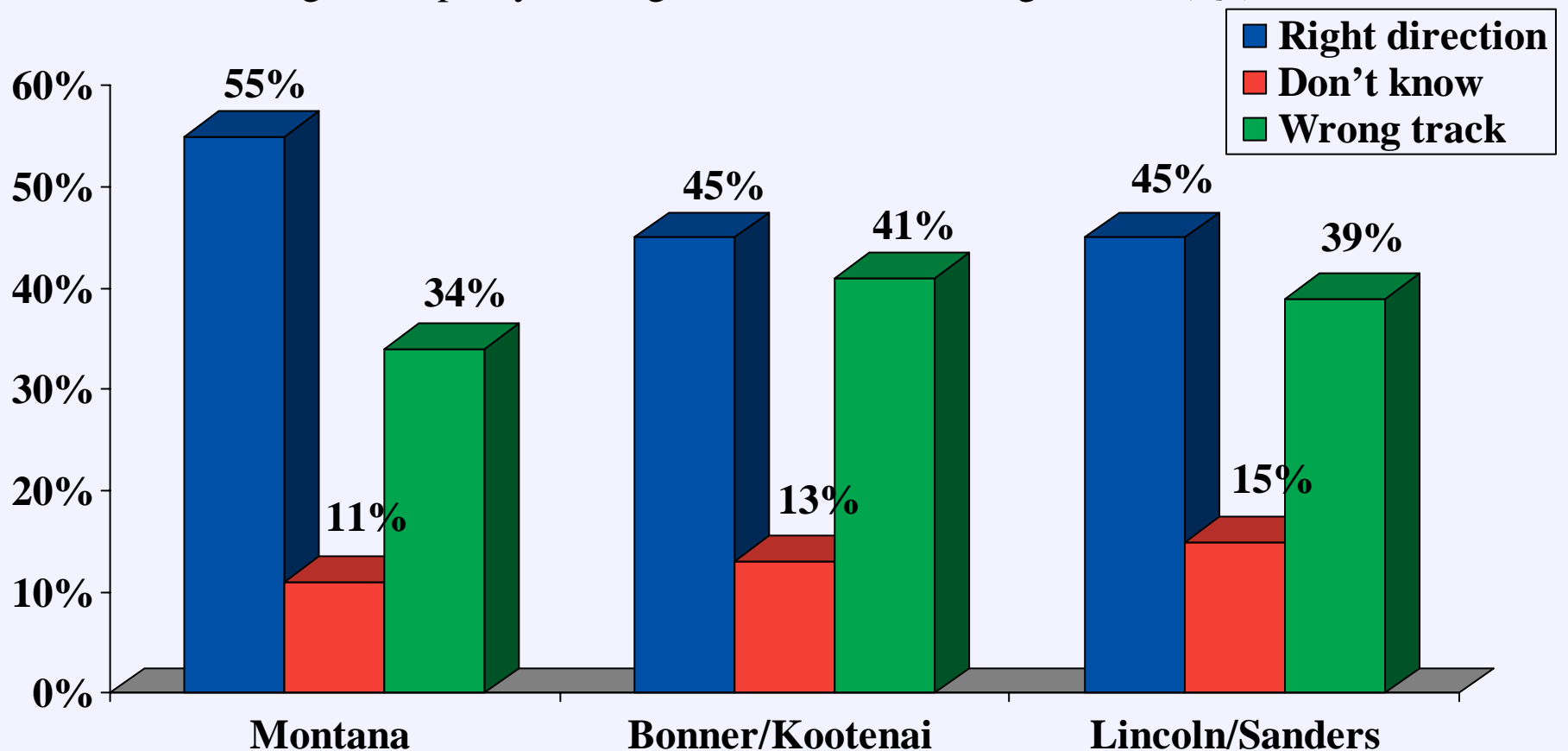
Survey Methodology

- Method
 - Telephone interviews conducted July 5-7, 2005
- Sample
 - 400 interviews among a representative sample of voters in Montana, plus an additional 137 interviews in Lincoln and Sanders Counties (for a total of 150 interviews)
 - 150 interviews in Bonner and Kootenai, Idaho Counties
- Sampling error
 - Plus or minus 5% at the 95% confidence level for 400 sample
 - Plus or minus 8% at the 95% confidence level for the 150 sample



Voter Mood: *Optimistic in Montana, Not So Elsewhere*

“Do you think that things in (STATE) are generally going in the right direction, or do you think things have pretty much gotten off on the wrong track?” (Q1)



Major Issue Concern: *The Economy*

“What in your opinion is the single most important issue facing people in (STATE) today?” (Q2)

	<u>Montana</u>	<u>Lincoln/ Sanders</u>	<u>Bonner/ Kootenai</u>
Jobs/economy	40%	45%	25%
Taxes/high taxes	6%	3%	9%
Funding education	5%	2%	2%
Health care/cost of health care	4%	5%	1%
Education/schools	4%	1%	2%
Property taxes/high property taxes	2%	1%	15%
Population growth/overpopulation	2%	4%	5%
Growth/development	2%	2%	6%
Right to Work Law	--	--	5%

Idaho Elected Officials are Popular

“Please tell me if you have a very favorable, a somewhat favorable, a somewhat unfavorable, or very unfavorable opinion of each person. If you have no opinion or have never heard of the person, just say so.”

	<u>Favorable</u>	<u>Unfavorable</u>	<u>No opinion/ not heard of</u>	<u>Net favorable</u>
<i>Senator Larry Craig (Q22)</i>				
Bonner/Kootenai	56%	19%	25%	+37%
<i>Governor Dirk Kempthorne (Q19)</i>				
Bonner/Kootenai	55%	19%	26%	+36%
<i>Senator Mike Crapo (Q21)</i>				
Bonner/Kootenai	44%	15%	41%	+29%
<i>Congressman Butch Otter (Q20)</i>				
Bonner/Kootenai	43%	18%	39%	+25%

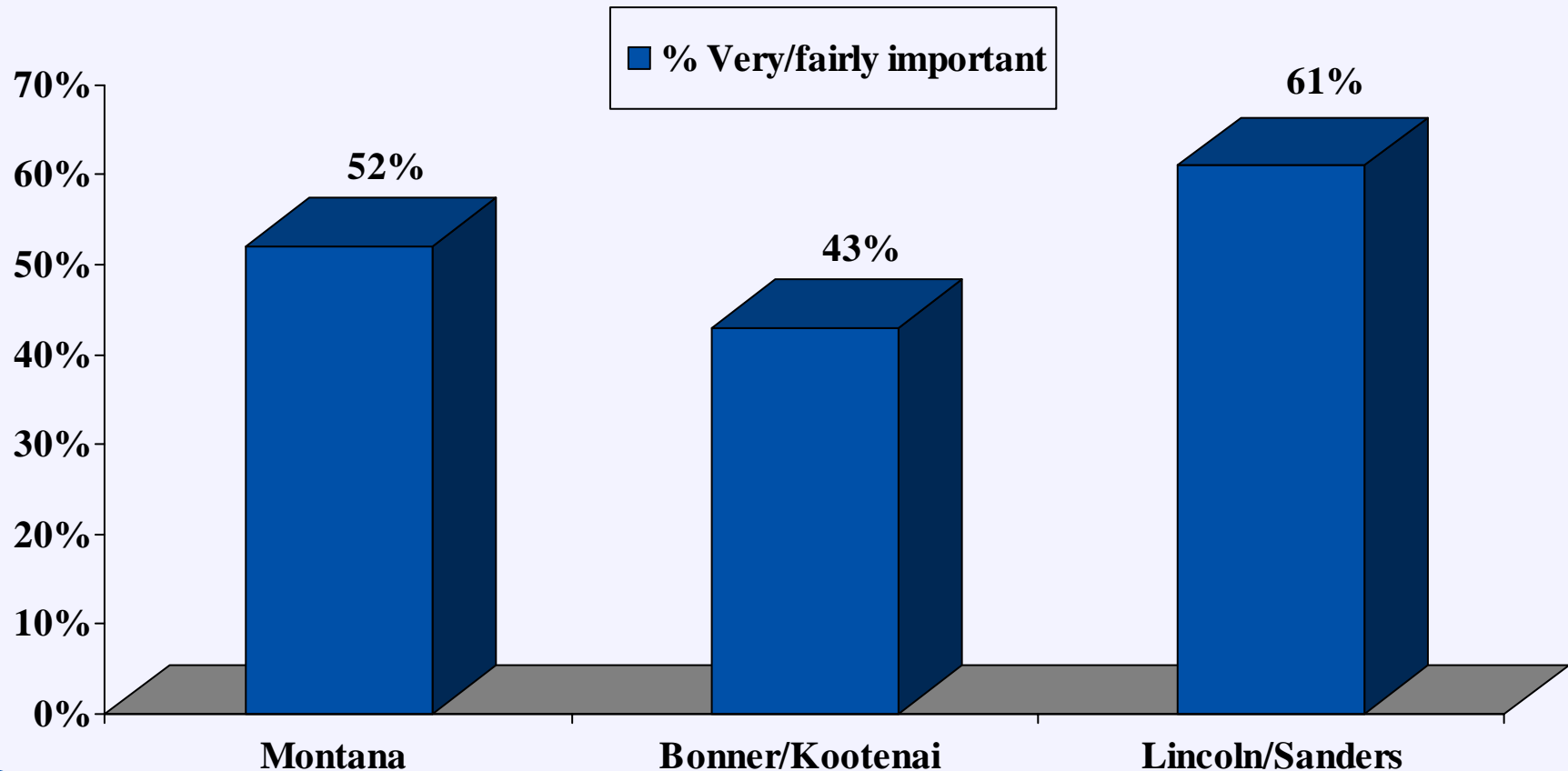
Image of Government Agencies: *Widely Credible*

“Please tell me if you have a very favorable, a somewhat favorable, a somewhat unfavorable, or very unfavorable opinion of each organization. If you have no opinion or have never heard of the organization, just say so.”

	<u>Favorable</u>	<u>Unfavorable</u>	<u>No opinion/ not heard of</u>	<u>Net favorable</u>
<i>U.S. Forest Service (Q10)</i>				
Montana	76%	15%	9%	+61%
Bonner/Kootenai	88%	6%	6%	+82%
Sanders/Lincoln	63%	30%	7%	+33%
<i>U.S. Fish and Wildlife Service (Q8)</i>				
Montana	74%	16%	10%	+58%
Bonner/Kootenai	79%	12%	9%	+67%
Sanders/Lincoln	75%	16%	10%	+59%

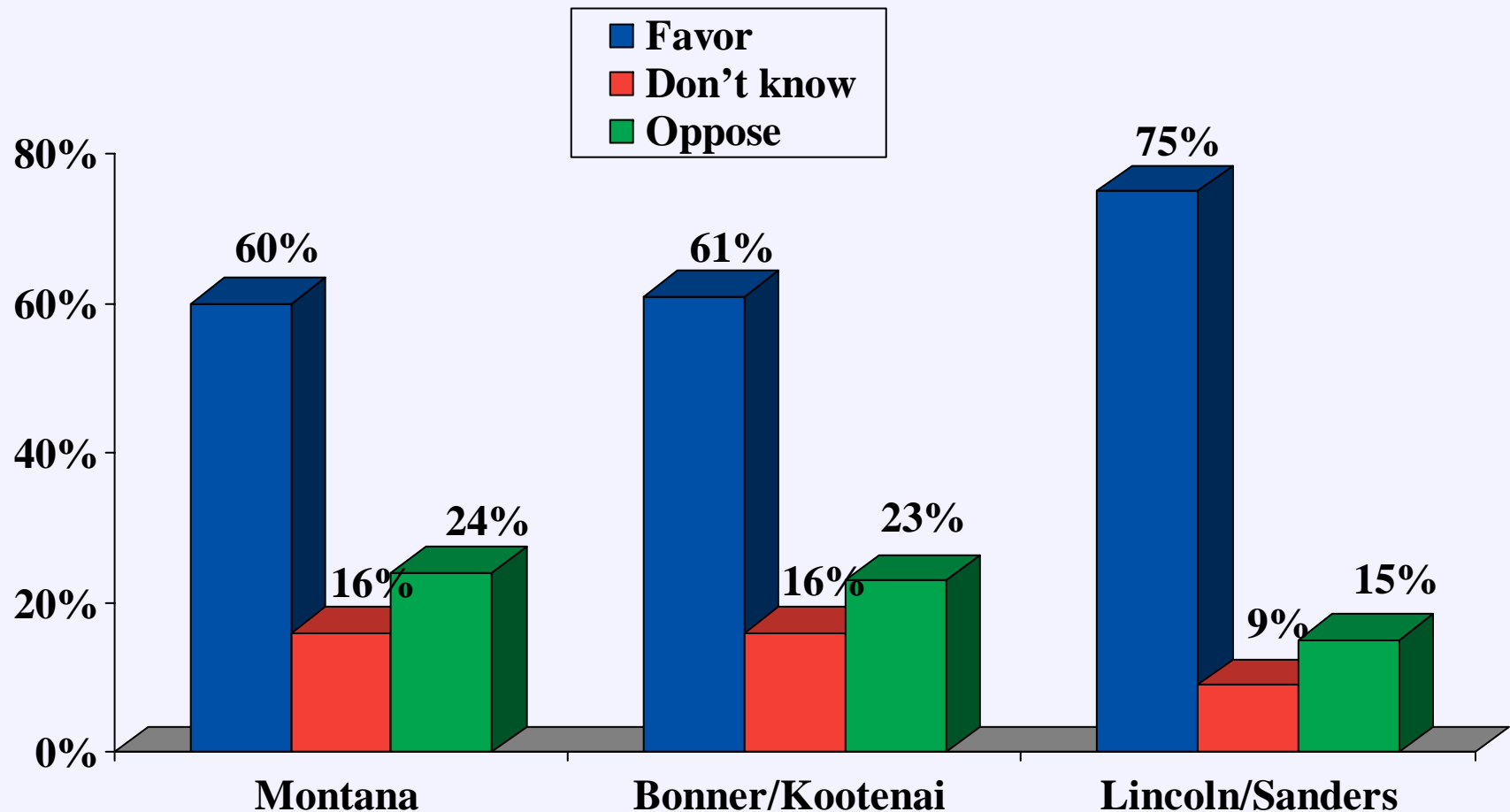
Mining Most Important in Northwest Montana

“In general, how important would you say the mining industry is to your area of the state, very important, fairly important, not too important or not important at all?” (Q4)



Mining is Favored Throughout the Region

“Do you favor or oppose mining in your part of (STATE)?” (Q6)



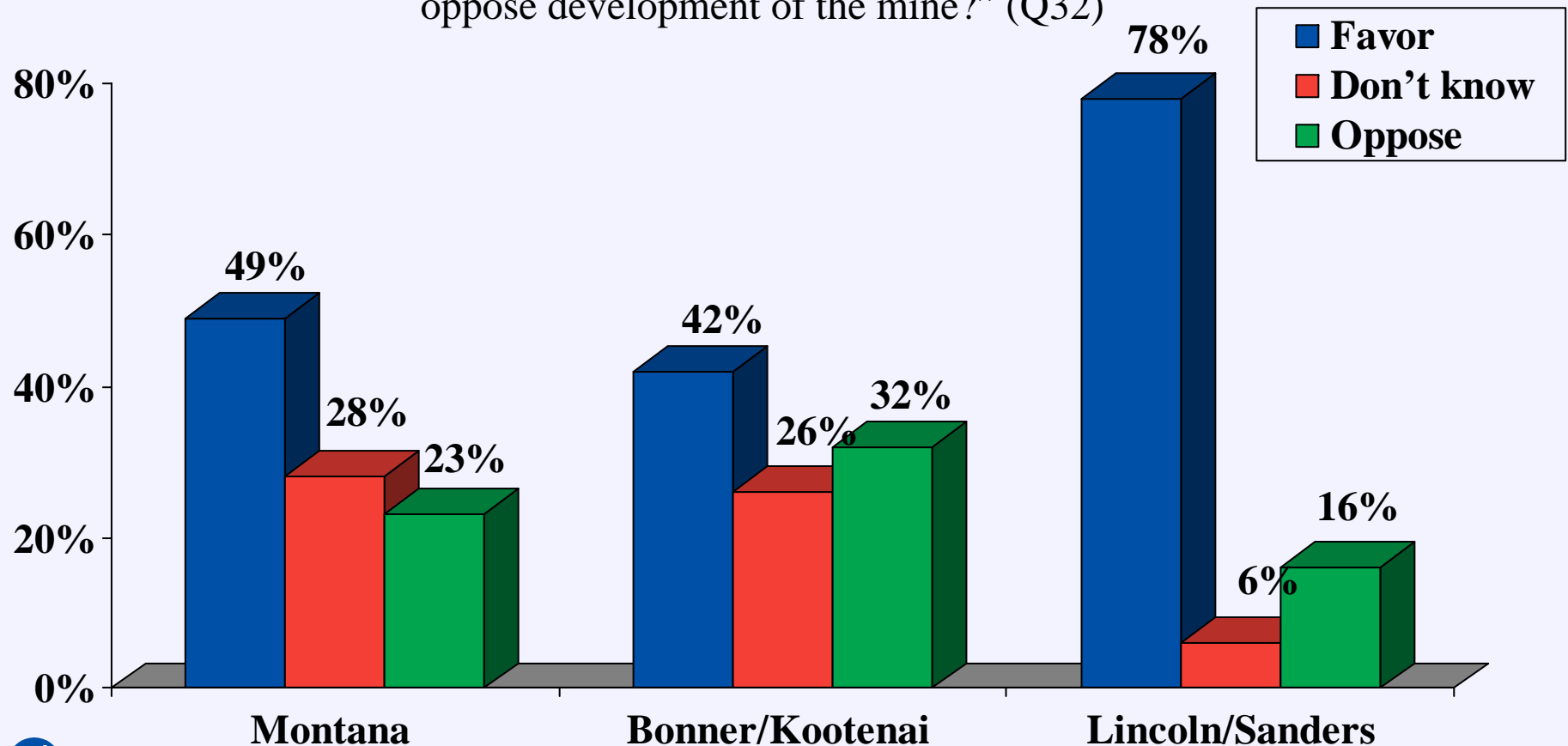
Recollections of Rock Creek Mine

“What have you heard about Rock Creek mine?” (Q27)

	Montana (N=400)	Bonner/Kootenai (N=150)	Lincoln/Sanders (N=150)
Not aware of mine	43%	30%	22%
Aware/haven't heard anything	33%	30%	26%
Want to mine/put in a mine	4%	5%	9%
Heard of/aware of mine	3%	3%	1%
Delayed/stalled/having problems with permits	1%	3%	3%
Environmental concerns	1%	2%	3%
Water pollution/will drain into rivers	1%	9%	4%
In/under Cabinet Wilderness	1%	1%	2%
News story/article	1%	2%	1%
Fighting with environmentalists	1%	1%	5%

Today, There is Little Opposition to Development of the Rock Creek Mine

“The proposed Rock Creek mine is located in Western Montana near Noxon. It is an underground mine that would yield copper and silver. Based on what you know or have heard, do you favor or oppose development of the mine?” (Q32)



Rock Creek Mine Supporters: *Good for the Economy/Jobs*

IF FAVOR IN Q32: “What is the major reason you favor development of the mine?” (Q33)

	<u>Montana</u>	<u>Bonner/ Kootenai</u>	<u>Lincoln/ Sanders</u>
Jobs/more/better jobs	47%	43%	64%
Economy/good for economy	14%	10%	16%
Support resource development	12%	19%	10%
Support mining	7%	8%	--
Bring business/industry to area	5%	2%	4%
Revenue for state	3%	--	--
Won't hurt anything/can be done safely	3%	6%	2%
Other responses*	7%	13%	3%
Don't know	2%	--	1%

* All 3% or less

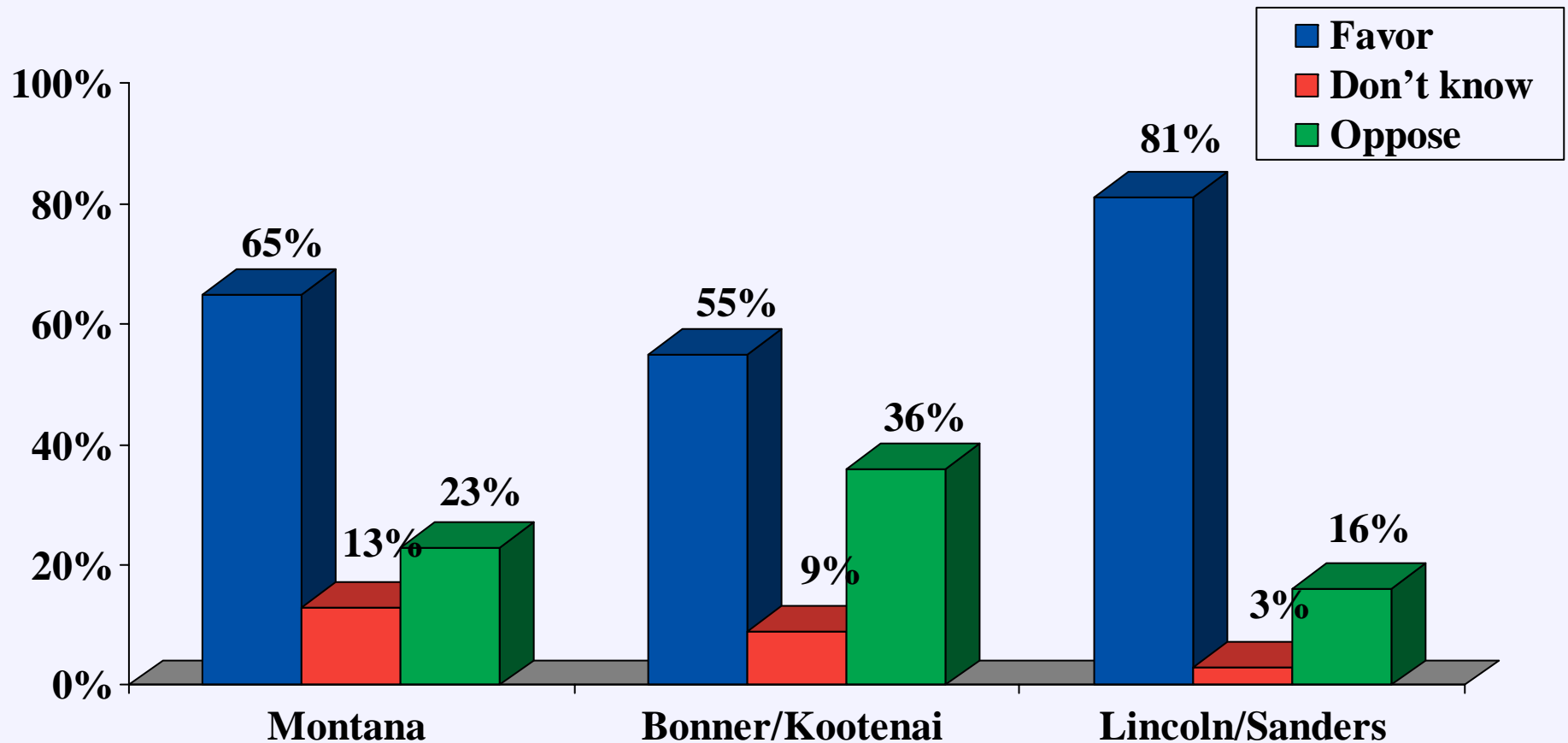
Rock Creek Mine Opponents: *Environmental Concerns*

IF DON'T KNOW/OPPOSE IN Q32: "What concerns or objections do you have about development of the mine?" (Q34)

	<u>Montana</u>	<u>Bonner/ Kootenai</u>	<u>Lincoln/ Sanders</u>
Environmental concerns/impact	22%	18%	15%
Water quality/pollution of rivers	10%	21%	15%
Disturbance of land/wilderness	8%	10%	24%
Reclamation/they don't clean up	8%	2%	--
Pollution	5%	7%	9%
Other responses*	26%	18%	27%
Don't know	21%	23%	9%

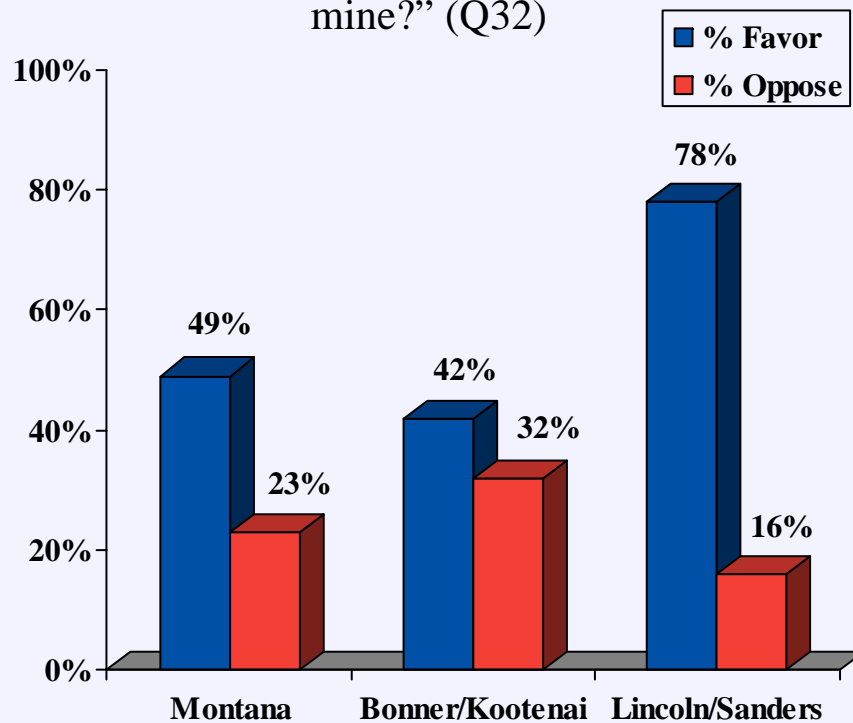
Development of the Rock Creek Mine: *Informed Ballot*

“Now after everything you have heard, do you favor or oppose development of the Rock Creek mine?” (Q50)

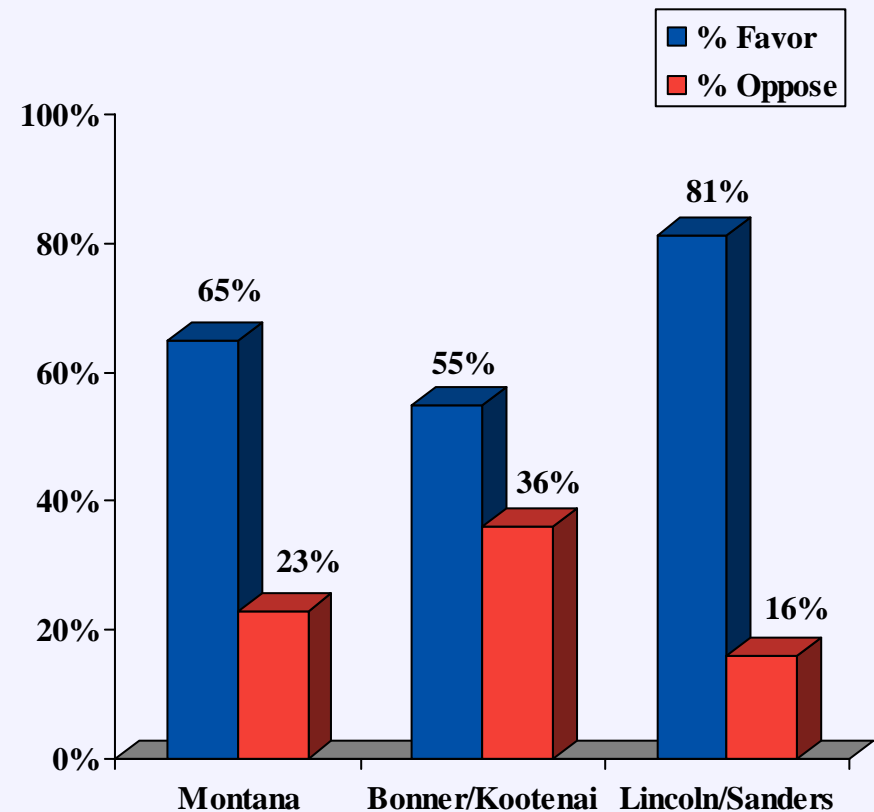


Development of the Rock Creek Mine: *Initial Ballot vs. Informed Ballot*

“The proposed Rock Creek mine is located in Western Montana near Noxon. It is an underground mine that would yield copper and silver. Based on what you know or have heard, do you favor or oppose development of the mine?” (Q32)

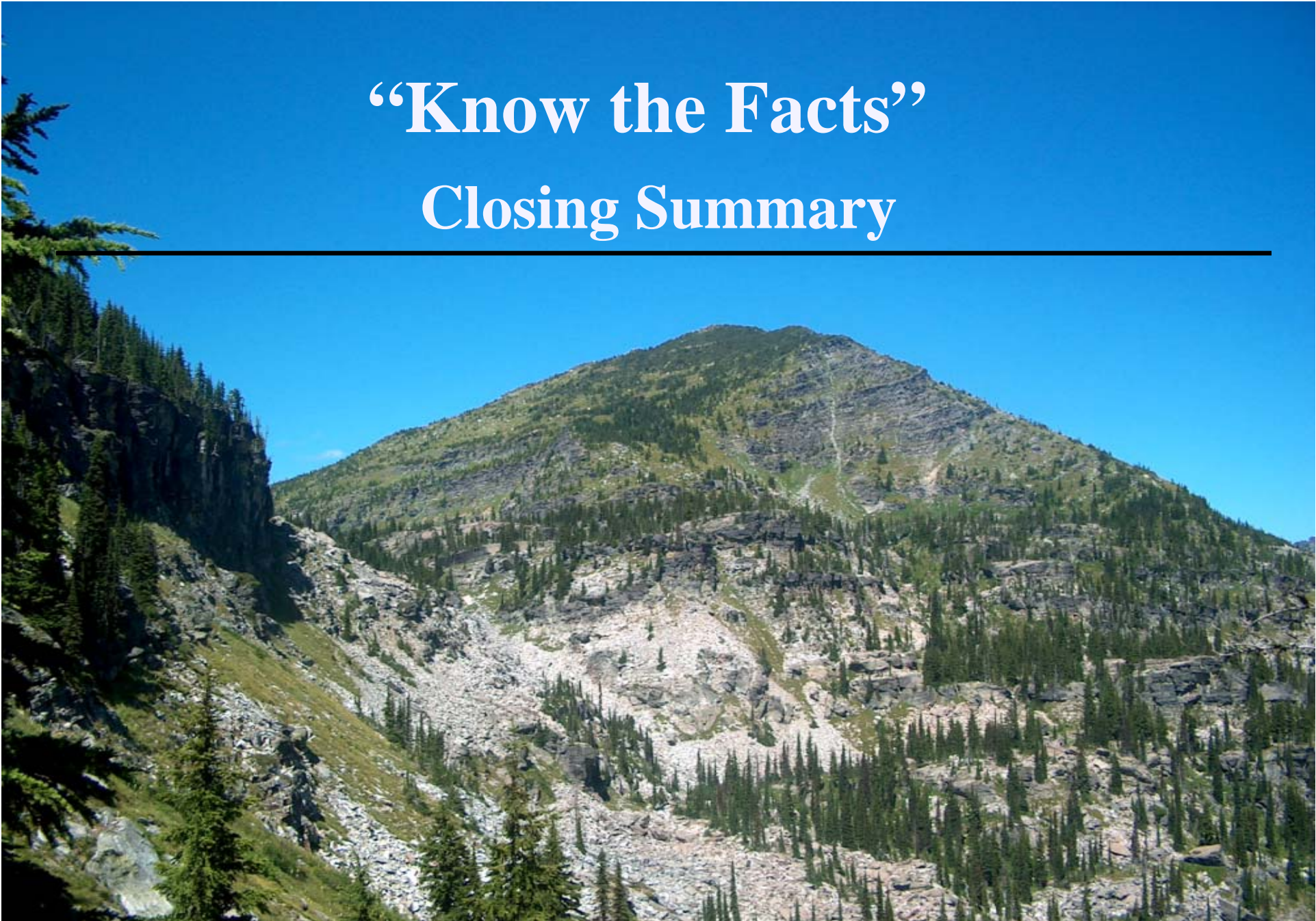


“Now after everything you have heard, do you favor or oppose development of the Rock Creek mine?” (Q50)



“Know the Facts”

Closing Summary



The mine represents a threat to the water quality of the Clark Fork and Lake Pend Oreille because of the “toxic tailing pond” near the Clark Fork River.

- **Not true!**
 - **Tailing material is inert beach sand and non-toxic**
 - **No cyanide, reagents are bio-degradable**
 - **All processed water is recycled**
 - **Only excess water from the mine will be discharged after treatment and will meet or exceed required water quality standards**
 - **20+ years of monitoring at Troy shows no impact**



The underground mining will adversely impact threatened and endangered grizzlies.

- **Not true!**
 - **No wilderness disturbance**
 - **Five miles of roads closed**
 - **Purchase additional 2,450 acres for permanent habitat**
 - **Fund two MDFWP Bear Management Experts**
 - **Mandatory employee bear awareness training**
- **We can have both bears and jobs**



Mine will create subsidence that threatens to drain high mountain lakes

- **Not true!**
 - **Mining will be conducted from 450' to 1,450' beneath the surface**
 - **Buffer zones will keep mining 1,000' from Cliff Lake**

"If I have to give up silver to keep the grizzlies, then I will." Sandpoint resident.
Silver is only used for vanity jewelry and not needed.

- **Not true!**
 - **Over 62% of silver is used for industrial purposes; computers, appliances, phones, medical devices, and solar energy cells**
 - **Only 31% is used for jewelry and 4% for coins and metals**
- **Silver plays a vital role in our economy**



“Know the Facts”

